

CT DEEP **2017**
FISHING REPORT NUMBER 14
7/13/2017



Bowfin (*Amia calva*)



YOU CAN FIND US DIRECTLY ON FACEBOOK. This page features a variety of information on fishing, hunting, and wildlife watching in Connecticut. The address is www.facebook.com/CTFishandWildlife.

SHARE THE EXPERIENCE
Take someone fishing

INLAND REPORT

LARGEMOUTH BASS. With some exceptions fishing has been good in many areas. Places to try include Highland Lake, Glasgo Pond, Shenipsit Lake, West Hill Pond, Mansfield Hollow Reservoir, Congamond Lakes, Winchester Lake, Lake Saltonstall, Lake Wononskopomuc, Bantam Lake, Lake Lillinonah, Beseck Lake, East Twin Lake, Babcock Pond, Wood Creek Pond, Rogers Lake, Pickerel Lake, Dog Pond, Red Cedar Lake, Bishop Pond, Lake McDonough, Candlewood Lake (fish are still acting “post-spawn”, try Senkos near structure and dropshots around outsides of weedbeds), Silver Lake, Black Pond (Meriden), Mudge Pond, Batterson Park Pond, Stillwater Pond, Amos Lake and Halls Pond. In lakes with some deeper water (including Ball Pond and Candlewood Lake), bass have been suspended around 15-20 feet, try swim baits here. In the southeast, bass have been on a “bug” kick, going after insects.

Tournament angler reports are from Gorton Pond (slow to good, 3.64 lb lunker), Lake of Isles (fair, but with a 5.70 lb lunker), Long Pond (slow, 4 lb lunker), Mansfield Hollow Reservoir (fair to good), Pachaug Pond (on the tough side, with only a 3.5 lb lunker), Bantam Lake (fair to good, 3.5 lb lunker), Lake Lillinonah (tough, but with 4.63 lb and 4.44 lb lunkers), and the CT River (slow to fair for one club, with a 3.4 lb lunker).

SMALLMOUTH BASS fishing remains slow in many lakes and ponds, but there are some brighter spots. Places to try include Lake Lillinonah, Lake Zoar, Candlewood Lake (anglers are finding some action), Mashapaug Lake, Colebrook River Lake, and Lake McDonough. Fishing for river smallmouth is good to very good in the Housatonic River, also try other rivers such as the Naugatuck River, Shetucket River and Quinebaug River. **Tournament angler** reports are from Pachaug Pond (some 1-lb smallies in the bags), Bantam Lake (slow to fair), Lake



Rock snot continues to bloom. Above is *Cymbella janischii* (rock snot) as observed on June 14, 2017 in the Barkhamsted portion of the West Branch Farmington River (see page 3 and also Notes & Notices for more information).

Lillinonah (fair to good) and the CT River (Haddam to Middletown, some smallies caught, 2.24 lb lunger).

NORTHERN PIKE. Only a few reports for pike this week. Weedlines early and late in the day typically hold pike. Places for pike include Bantam Lake. Lake Lillinonah, Mansfield Hollow Reservoir, Quaddick Lake (try up in Stump Pond), Hopeville Pond, the Connecticut River, the small impoundments along the upper Housatonic River (some catches reported from the Falls village area), and Winchester Lake.

WALLEYE. Some catches reported but fishing has slowed, reports are from Squantz Pond (beginning to slow, but still some catches at night), Saugatuck Reservoir (few) and Lake Saltonstall. Other locations to try include Batterson Park Pond, Beach Pond, Cedar Lake, Gardner Lake, West Thompson Lake, Mount Tom Pond, and Mashapaug Lake.

PANFISH are providing excellent summer time action. A simple worm and bobber will work best. Suggested locations include: Tyler Lake, Batterson Park Pond, Amos Pond, Barber Pond, Baummer Pond, Black Rock Lake, Burr Pond, Dooley Pond, Halls Pond, Lake of Isles, Lower Fulton Park Pond and McGrath Park Pond. Check out and download the FREE- CARE "Let's Go Fishing" Workbook available on the DEEP website at www.ct.gov/deep/care. Good reports for Black Crappie from Lake Lillinonah. White Perch are there for the taking in places like Lake Lillinonah and Shenipsit Lake.

KOKANEE has been a bit spotty, with good days and slow days at both East Twin Lake (mostly 12 inch fish with some 14 inchers) and West Hill Pond. Try Beads, Mooselook Wobblers, DB Smelt, and Flash King lures (blue & silver); or fishing corn over lights at night.

TROUT- RIVERS & STREAMS – Conditions for the weekend should be fairly good. The forecast includes more rain and some cool weather for Friday, followed by pleasant weather (including moderate temperatures and humidity) for the weekend (then some heat comes back next week). Water temperatures are generally moderate, flows are more than adequate (at or above typical early July levels in most areas, especially in eastern CT – see stream flow graphic on page 5). With some more rain, possibly heavy, in the forecast for tonight (Thursday) and Friday, flows, however, be high in some areas to start the weekend. Anglers should keep smaller streams and tributaries in mind as they'll drop quickest (stream flows for a number of areas can be found on the USGS website at <http://waterdata.usgs.gov/ct/nwis/rt>).

ZEBRA MUSSELS REMINDER

Zebra mussels are now found in a number of locations scattered throughout the Housatonic River and its impoundments including Lake Lillinonah (since 2010), Lake Zoar (since 2010) and Lake Housatonic (since 2011).

Prior to their discovery in Lakes Lillinonah and Zoar in 2010, zebra mussels had been found (1998) in CT only in East Twin Lake and West Twin Lake (Salisbury). Anglers fishing in any of these waters and western Connecticut in general **should use extra care to avoid transporting water, aquatic vegetation, and possibly zebra mussels to new locations.** Information

For more information including precautions that should be taken to prevent the spread of zebra mussels to additional waters, visit www.ct.gov/deep/invasivespecies or the Aquatic Invasive species section of the 2017 CT angler's Guide (www.ct.gov/deep/anglersguide).



REMINDER TO ANGLERS-

FISHING IN OR CASTING INTO PERMITTED SWIM AREAS IS PROHIBITED.

State regulations prohibit fishing in or into a swim area that has been permitted by DEEP. Additionally, vessels cannot be operated within a permitted swim area, and there's a 100 foot "no-wake" zone around the perimeter. Swim areas that have been permitted by DEEP will be marked by white buoys with orange markings, and there should be a permit number posted on the buoys. They may or may not have small orange barrier floats to further demarcate the area. Should questions arise concerning the validity of the swim area (no permit numbers or the area appears to have been changed/enlarged or keeps moving), please contact DEEP's Boating Division at 860-434-8638.



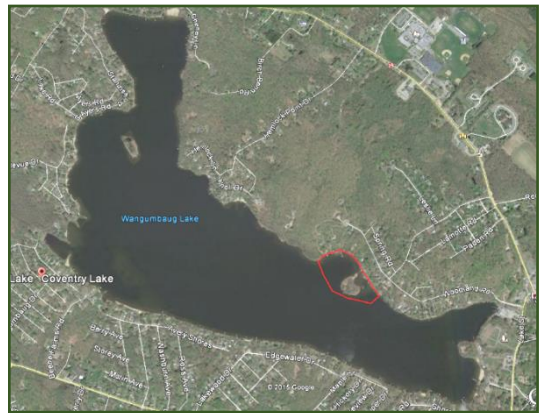
CONNECTICUT RIVER. The river has dropped significantly and the turbidity and floating “debris” have dropped a bit. Schoolie **STRIPED BASS** have thinned out. Most action, especially for keepers will be back towards the sound. The mouth continues to have fair action from shore at the DEEP Old Lyme boardwalk. Anglers in the Middletown area have been catching **CATFISH** in the holes. **CARP** including some nice “mirror” and “fantail” have been caught between Middletown and Haddam. **SMALLMOUTH BASS** are putting on a good show in the northern part of the River. Try top water plugs and 4”, Mr. Twisters, Wacky Style salted worms in motor oil or chartreuse for these feisty jumpers. **BOWFIN** are starting to be more aggressive towards lures and bait resulting in increased catches. The Bowfin (*Amia calva* – cover photo) has an elongate body, fairly hard (bony plates) head, and long fins on the dorsal and ventral surface. They have some similarity to the infamous “snakehead”. A change in the fishing regulations now allows anglers to fish for, and harvest, bowfin if they desire. There are no size limits, daily limits, and the season is open year round.

NOTES & NOTICES:

CONNECTICUT RIVER (invasive species alert). Hydrilla was recently found in the main stem Connecticut River in Glastonbury (near Glastonbury’s Riverfront Park & Boathouse). See the Coventry Lake entry below for what river users should do to prevent spread of this invasive plant to other waterbodies.

COVENTRY LAKE (invasive species alert). Hydrilla, a very highly invasive aquatic plant, has been found growing in Coventry Lake. All lake users should take extra care to check and clean their boats (including canoes, kayaks and rowing sculls), trailers, and fishing equipment before leaving the boat launch, or leaving the lakeshore.

Coventry Lake (Wangumbaug Lake) boaters should avoid the area outlined in red to avoid fragmenting and spreading hydrilla. This is only area in the lake where hydrilla has been found.



WEST BRANCH FARMINGTON RIVER (invasive species alert). *Cymbella janischii* is a close relative of Didymo and has been introduced to the West Branch Farmington River (first noticed in 2011). *C. janischii* is native to the Pacific Northwest and not naturally found on the Eastern seaboard. Currently this type of “Rock Snot” is very abundant and should continue to grow through July. The primary area of the river is from New Hartford upstream to Riverton. Note: Didymo is still present primarily in the West Branch above the Still River in Riverton. To help prevent the spread to other rivers and streams, all anglers should take extra care to clean and dry waders that have been in contact with rock snot. We recommend having a pair just for use only in the Farmington River.

PHOTO CONTEST: Do you have the next Angler’s Guide cover shot? Email us your high quality (high resolution) photos at Deep.inland.fisheries@ct.gov and include [photo contest](#) in the subject line.

Youth Fishing Passport [Fishing Challenge Scorecard](#): Download the new scorecard for your Youth Fishing Passport Holder on the program web page at www.ct.gov/deep/yfp. Top anglers will receive a great prize pack of fishing gear.

CT FISHIN’ TIPS is our monthly e-newsletter dedicated to providing information, tips and pointers about fishing in Connecticut. Get CT Fishin’ Tips delivered automatically to your in box by subscribing at www.ct.gov/deep/newslettersubscription

FACEBOOK FISH OF THE WEEK:

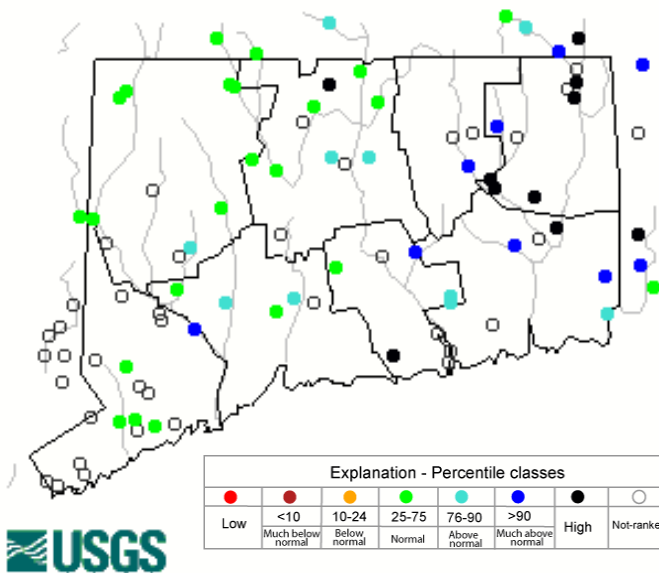


Srija Sharma and a nice Common Carp, Jeffrey Crisanti with a nice 'bow, Joe Tkacz and hefty brown trout, and Dean Cassella Jr. with a trophy Walleye. Post your catch to

www.Facebook.com/ctfishandwildlife

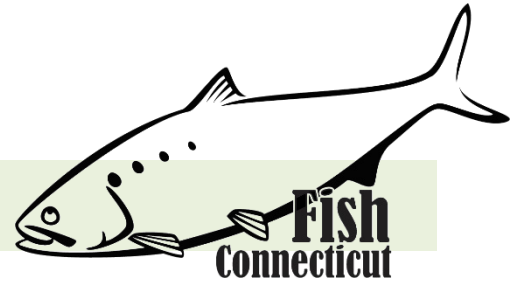
Stream flow conditions

Thursday, July 13, 2017 16:30ET



Data in the state graphic to the left are generated by the United States Geologic Survey (USGS) and are available on line at: <http://waterdata.usgs.gov/ct/nwis/rt> A percentile is a value on a scale of one hundred that indicates the percent of data in the data set equal to or below it. For example streamflow greater than the 75th percentile means only ¼ of the streamflow values were above the value and thus would be considered "above normal". Stream flow between the 25th and 50th are considered to be "normal flows" and those 25th or less are considered to be "below normal".

MARINE FISHING REPORT



Surface water temperatures in Long Island Sound (LIS) are in the mid to high 60's °F. Check out the following web sites for more detailed water temperatures and marine boating conditions:

<http://www.mysound.uconn.edu/stationstat.html>

http://marine.rutgers.edu/mrs/sat_data/?nothumbs=1

<http://www.ndbc.noaa.gov/>

<http://www.wunderground.com/MAR/AN/330.html>

IMPORTANT NOTE to ANGLERS: there are many reports of **leaping sturgeon** in the lower CT River (Essex to Old Saybrook). A common spring behavior for these **endangered fish species (Atlantic and shortnose)**...as they attempt to gulp air for their primitive swim bladder. Anglers are incidentally snagging or catching these sturgeon while bottom fishing. Please release all sturgeon without avoidable injury as their populations are slowly recovering and are at VERY low levels. They are a protected species.

Connecticut State Boundary Line in Long Island Sound. Anglers please note: Though Connecticut has reciprocity with neighboring states (New York, Rhode Island, Maine and Massachusetts), residents of Connecticut are required to have a CT Resident Marine Waters or All Waters Sport Fishing License to fish in the Marine District.

LICENSE RECIPROCITY & CT RESIDENTS: Anglers please note: Although Connecticut has reciprocity with neighboring states (New York, Rhode Island, Maine and Massachusetts), residents of Connecticut are required to have a CT Resident Marine Waters or all-Waters Sport Fishing License to fish in the Marine District.

STRIPED BASS fishing will improve on the back side of the "Buck" full moon. Striped Bass again have been staying in deeper water by day and coming into shore at night. They have been preferring fresh bunker and live-lining eels at the **Weather Buoy, Calf Pasture Beach Pier, BH Buoy, the Middleground, Buoy 18 and 20, Norwalk Islands, Sunken Island, Seaside Park and Hickory Bluff Bridge in the Rowayton Section of Norwalk as well as Greens Ledge Lighthouse.** These bass have been gulping up FRESH bunker and live eels. Six inch Tsunamis, Talking Poppers and Heddon Superspooks have also been outstanding performers for striped bass. The Morningside area of Milford, Walnut Beach, Gulf Beach Pier and the Milford Audubon Society have been excellent locations for catching that trophy-sized striped bass. **Dawn and dusk is prime time for large stripers on the reefs, rip areas and lower coastal tidal rivers. Live lining eels, bunker or hickory shad has been the ticket.** Striper areas include the Watch Hill reefs, lower Thames River, the Race, Plum Gut, Pigeon Rip, outer Bartlett Reef, Black Point, Hatchett Reef, lower Connecticut River (Great Island), Long Sand Shoal, Cornfield Point, Southwest Reef (outer), Westbrook, Six Mile Reef, Falkner Island area, the reefs off Branford, New Haven Harbor (including Sandy Point), Charles Island area, Housatonic River, buoys 18 and 20 off Stratford Point, Stratford Shoal/Middle Ground, Bridgeport Harbor, Penfield Reef, around the Norwalk Islands, and Cable and Anchor Reef. Shore locations include...**Connecticut River by Dock and Dine and the DEEP Marine Headquarters fishing pier.**

SUMMER FLOUNDER (fluke) fishing has been inconsistent from Stamford to Greenwich but a little stronger from New Haven to Darien. By boat, keepers have been found this week in 40'-50' of water. The Middleground has been very good. Also, Buoys 18 & 20 are home this week to some very large Fluke. From shore, Bucktails with a Berkley Gulp tagged with a little bait has been producing some winners at **South Benson Pier, Southport Harbor, Calf Pasture Breakwater and Pier and Todd's Point near the Sailing School**. Fluke spots include south shore of Fishers Island (Isabella Beach, Wilderness Point), Watch Hill to Napatree Point, off the Stonington breakwater, mouth of the Mystic River to Groton Long Point, Thames River channel, Gardiners Bay over to Greenport, NY, Twotree Channel, Black Point/Niantic Bay/River, Long Sand Shoal, Westbrook-Clinton area, Falkner Island area, New Haven Harbor to West Haven, off the mouth of the Housatonic River, Norwalk Islands, and across over to Port Jefferson, NY. **Minimum size is 19 inches and the daily creel limit is 3 fish per person.** Time to get the boat, and fishing gear ready for some phenomenal early season fluke fishing. [CT Bait & Tackleshop List](#)

BLACK SEA BASS fishing is tremendous. Black Sea Bass fishing has been awesome this week at the Norwalk Islands, Sunken Island, Buoy 18, Buoy 20 and the Weather Buoy, also the Middleground in 35'-50' of water has been phenomenal especially while enticing them with Squid, Clams and Spearing on a High-Low rig. It has not been unusual this week to reel in a 19" or 23" Black Sea Bass. Don't like using bait? – try a small diamond jig with a bucktail. Black Sea Bass typically prefer FRESH clams. Remember, **CT black sea bass regulations are as follows...15 inch min. length, 5 fish daily limit from May 1st to December 31st.** Berkely Gulp (swimming mullet) on a jig along with squid and a spinner works great for these "Bucketmouths".

SCUP (porgy) fishing is on fire in the western Sound; especially along the flats and from the shores of; Pleasure Beach, Saint Marys by the Sea, Sherwood Island State Park, Compo Beach, Todd's Point, the Wall in Stratford and also Calf Pasture Pier. At Seaside Park they are practically jumping straight into your cooler. Sand worms and Clams on a high-low rig are working best. High-low rigs with 2

different baits double your chances at bringing home dinner. Porgy fishing has also been reported at these shore fishing locations: Mystic River Park, UCONN Avery Point, Rocky Neck State Park, **Harkness Memorial State Park**, Meigs Point Hammonasset State Park and **Fort Trumbull State Park**. Locate your favorite [Enhanced Shore Fishing Opportunities](#) for these hard fighting and excellent eating "Reef Slammers". These "panfish of the sea" are easily caught on sandworms/cut squid or any other small piece of bait. Contact your [local bait and tackleshop](#) for updated fishing information.

WEAKFISH fishing continues to be very good in the central and western Sound. Fish range from 18-28 inches. Central and western Sound catches are improving daily as the population rebounds. Good fishing in Niantic, New Haven Harbor by the breakwaters over to Woodmont/Milford Point and along Stratford shoals. **Weakfish prefer sand worms and clams at low light and dusk.** One of the best eating saltwater fish you will ever catch.

BLUEFISH fishing continues to be good for harbor blues. Although the Bluefish schools have been spotty and more localized, there are sufficient amounts of schools to have an excellent day of fishing at Middleground, Calf Pasture Beach Pier and Seaside Park. Just look for the Seagulls. **Most of the local Long Island Sound reefs have many harbor-sized blues cruising around them.** Bluefish schools have

SHORE FISHING SPOTS & TIDE TABLE INFORMATION

To find a saltwater shore fishing spot close to where you live, go to the following website:

<http://www.lisrc.uconn.edu/coastalaccess/>.

For **Enhanced Opportunity Shore Fishing** sites and other fishing information including a site map go to the following website

<http://www.depdata.ct.gov/maps/saltwaterfish/map.htm>.

Please see page 64 of the [2017 CT Angler's Guide](#) for CT tide information.

been scattered, sometimes mixed in with striped bass during the day in deeper water, sometimes arriving inshore during daylight hours. These “shark wannabes” will eat just about anything and they are real fun to catch. “Snappers” (juvenile bluefish) and “Harbor Blues” (16 - 22 inches) are also very common along many shore locations. These under sized bluefish provide great sport for shore anglers. Try the lower reaches of tidal rivers and estuaries...you will be glad you did as these predators push the bait up rivers.

STRIPED SEAROBIN fishing is awesome in LIS. These beautiful and strange looking fish are now very common especially when bottom fishing at many of Connecticut’s shore fishing sites. **Searobin are in abundance almost everywhere, and more and more anglers are realizing the somewhat tedious task of filleting them is well worth it - they are quite tasty.** They love sandworms, squid and any live or dead bait. They are also very good to eat. Please be careful when handling them...be mindful of their spines located on top of their head and gill cover. Searobins are very good eating.

BLACKFISH (TAUTOG) fishing season is open in Connecticut waters. **The daily creel limit is 2 fish per person and the minimum size is 16 inches.** Tautog love eating crabs...try green, Asian and hermit crabs for bait. Look for tautog in shallow water as they begin spawning over shellfish beds. Other prime locations include: pilings with mussel beds and rock (reef) piles (5 to 30 ft).

BLUE CRAB are in the molting phase (sally crab) and becoming more active in the tidal creeks and rivers as the water warms up. **There appears to be a lot of smaller crabs out there...a good sign for a great year of crabbing.** Please remember it’s mating season for the crabs and release all egg-bearing females (sooks or lemon bellies). There are some large “jimmies” (male crabs) being captured (8.0 inches spike to spike) along with some impressive sooks. **Remember... all egg bearing females must be released without avoidable injury.** Minimum carapace length is 5 inches for a hard shell crab. Please contact your local bait and tackle shop for most updated information (local hot spots), legal crab traps and bait to use for your fun-filled crabbing. Legal gear types include: scoop (dip) net, hand line, star crab trap, circular (topless) trap not exceeding 26 inches in diameter. Maryland Style crab traps are prohibited. **Chicken with the skin on it (along with a long handle net) is the preferred method to capture these tasty crabs.** [Blue Crab Fact Sheet](#)

NOTABLE CATCHES –

<i>Species</i>	<i>Length (in.)</i>	<i>Weight (lbs)</i>	<i>Angler</i>
Porgy	16"	C&R	Evan Kamoen
Black Sea Bass	22"	C&R	Evan Kamoen

CAUGHT A TROPHY FISH - MARINE TROPHY FISH AWARD PROGRAM AFFIDAVIT

The Connecticut Department of Energy and Environmental Protection is an Affirmative Action/Equal Opportunity Employer that is committed to complying with the requirements of the Americans with Disabilities Act. Please contact us at (860) 418-5910 or deep.accommodations@ct.gov if you have a disability and need a communication aid or service; have limited proficiency in English and may need information in another language; or if you wish to file an ADA or Title VI discrimination complaint.

DEEP WEEKLY Fishing Report



Connecticut Department of
ENERGY & ENVIRONMENTAL PROTECTION

79 Elm Street, Hartford, CT 06106

www.ct.gov/deep